

The Bulletin Mechanic

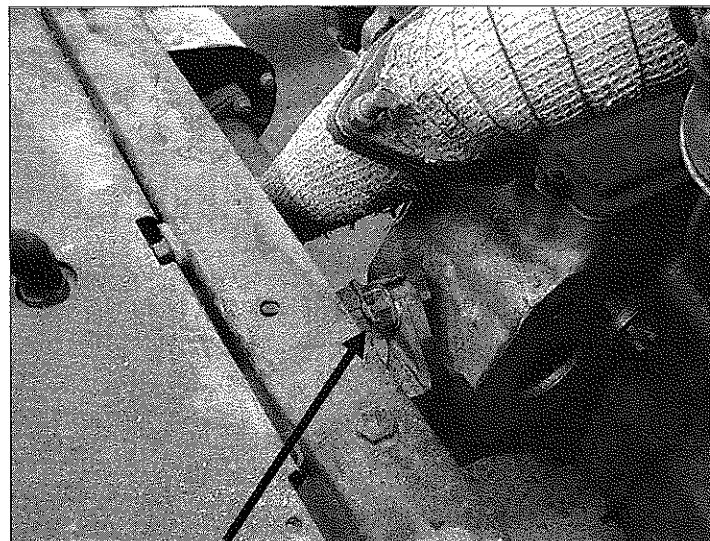
Organization Tips During Restoration: Documenting Your Project As You Go. ...By Chris Wantuck

Reprinted from the Metro Region's *Metropolitan Skyline*

Few of us take on the immense task of performing a full ground-up restoration of a collector car. Even if it's not a complete restoration you're contemplating, there are some steps you can take that will aid you in documenting your project that will be invaluable when you go through the process of research and reassembly. This article suggests some obvious as well as some not-well-known tips that should help you and perhaps others document a certain model's restoration. By saving information in digital form you will help yourself and others who have the same marque and model.

During disassembly, take time to capture the details of how parts are mounted, their appearance and orientation and even recognizing and documenting missing or broken pieces. This is not to say that over the past several decades no changes were made that altered the original version, but at least it is important to document these details as they are currently presented and have them for comparison at a later date. This process starts with a good notebook for recording a diary-like narrative coupled with images and diagrams.

Digital Camera. A convenient way to document details is with a camera which seems rather obvious. Digital cameras offer the ability to take as many pictures as you like. You can take several pictures of a particular area, one at a distance, another at moderate zoom to crop out surrounding areas and at full zoom for close-up shots. Some shots may get washed out from the flash, so taking pictures both with the flash on and disabled (using just ambient lighting) should be considered. Simply delete the ones that don't look quite right. Most car collectors now have home computers as well as digital cameras. Even if a digital camera is used without the aid of a home computer, unwanted pictures can be deleted before sending them to be developed. The price of digital cameras has fallen enough to dedicate one exclusively for shop use. If you already have a digital camera, perhaps you'll consider upgrading to a newer, more capable model for family use and keep the older model as the shop camera. You should expect to get some grease and dirt on it, so assigning one for the shop avoids messing up the family camera.



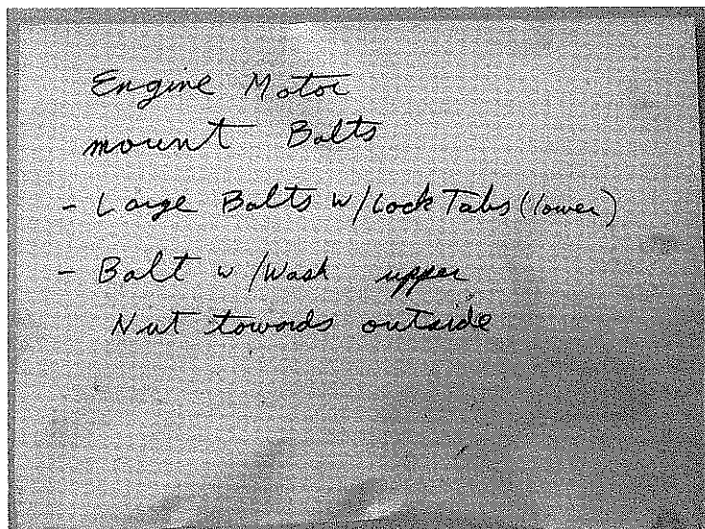
ENGINE MOUNTING BOLTS, NUT TO OUTSIDE,
COTTER PIN HORIZONTAL

Example of a standard JPEG digital camera image that has had notes added to it and re-saved as a .jpg image using PowerPoint.

Bound Notebook Diary. Purchase a bound book either with or without lines for use as your diary. Art- or craft-supply stores are great sources for

these types of books. Avoid loose leaf or spiral books as the paper is thin and pages can be torn out too easily. Don't forget to date each entry.

Home Computer. The advantage of using a home computer is the ability to view digital pictures at any time which includes zooming in on a particular area of interest without the time or expense of printing an enlargement. If necessary, an image can be printed using either less expensive paper or high-quality photographic paper, depending on the task at hand. Also, using common Microsoft tools like PowerPoint help with documenting along the way. Did you know that PowerPoint allows you to insert a picture into a slide, add comments or highlight areas with arrows and resave the result as a .jpg picture? Be attentive when using the Save As function to save as a .jpg image.



Large envelope marked with contents.

Envelopes. The use of many different-sized envelopes helps greatly when trying to keep your project organized. Large envelopes with self adhesive flaps make parts organization quite easy. Before depositing the parts and sealing it, write the contents on the envelope along with any notes such as part orientation or inventory. Plan ahead when organizing parts into envelopes. Parts that require chrome plating should be stored separate from others for easy retrieval when it comes time for plating them. You can close envelopes using painter's low adhesive masking tape if you think you may have to retrieve a part for fitting or inspection rather than tearing the envelope open and resealing it.



Clockwise, Sharpie Brand markers, large self-adhesive envelopes, medium size 6 x 9 envelopes and smaller 2 x 4 envelopes, older Nikon Coolpix digital camera, painter's masking tape and reinforced I.D. tags.

Marking Pens. Marking pens from Sharpie come in sizes ranging from thin-tip pens to chisel-tip markers. Sharpie permanent markers are worth the extra cost over other markers since their inks don't smear and they'll mark on almost any surface.

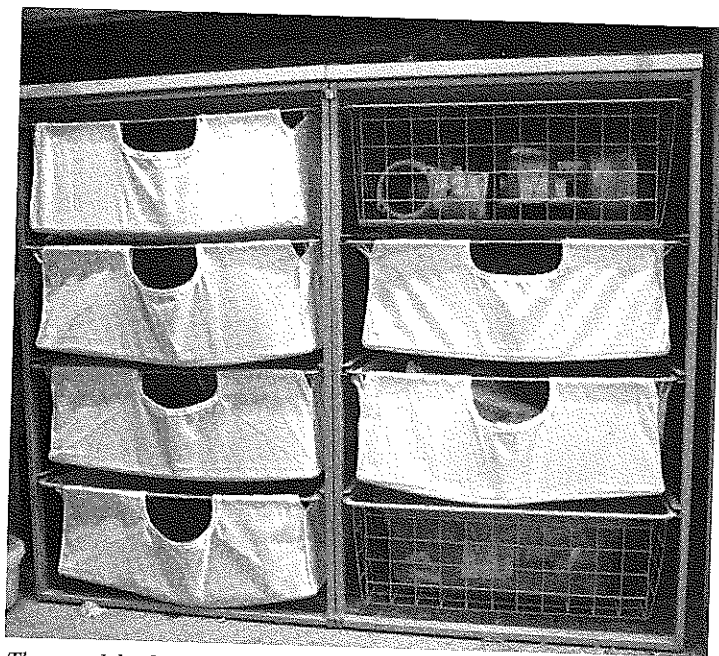
Tags. Reinforced tags with string or wire can be used for parts too large to fit into an envelope. Avoid the little cheap "price" tags with light thread. A tag that gets ripped off its part is of no value. You can add as many tags



This discarded aluminum baker's cooling rack works well as a multi-drawer storage unit. Thin 1/4-inch plywood was used to make the 30 drawers. Three large bins on top are for large parts.

as needed and suggest writing on both sides of the tag in case dirt or oil makes one side unreadable.

Shelving and other storage. Heavy-duty shelves provide a great place to store parts while the restoration continues until you need them. Avoid co-mingling your parts with any non-automotive supplies (or parts from a different car). Some heavy-duty "wire" type shelving units come with adjustable shelves and roller casters which makes their movement around the shop even easier. A discarded aluminum baker's cooling rack was just the ticket for making a storage rack for small parts. A weekend project made the 30 individual drawers using 1/4-inch Luan plywood. Also, economical storage bins are the sliding baskets from IKEA. The wire or cloth baskets are available in 4- or 6-drawer units and can be stacked. Open wire versions make looking for parts easy while the cloth ones keep small parts from getting lost.



These rack baskets from IKEA come in both open-wire and cloth-covered versions at about \$20 for a set of 4.

Summary:

Relying on your memory as to how your collectible was assembled is a recipe for disaster. Take many pictures of specific areas from different angles. You can always refer back to them later.

Record a chronological diary of your events. Include phrases that indicate how some parts are related to other areas. No one is grading you on your narrative so use vivid descriptions when appropriate.

Use a separate book or section of the diary to record a "parts or materials needed" list.

A little organizational effort up front will reap huge benefits when it comes to re-assembly. A side benefit includes being able to share your experience and knowledge with fellow enthusiasts. You will also have a record of the restoration project which can be invaluable when having your car judged or if you ever decide to sell the car.

Member Mentions: Jack Passey by Bill Burchett

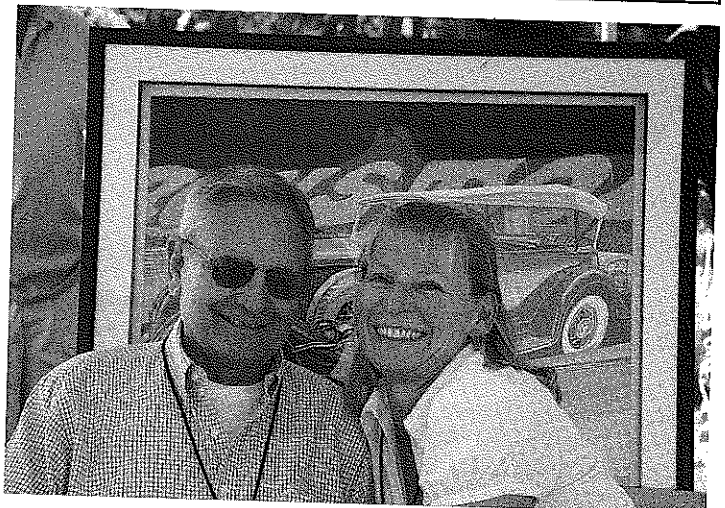


Photo courtesy of Ron Kimball Studios

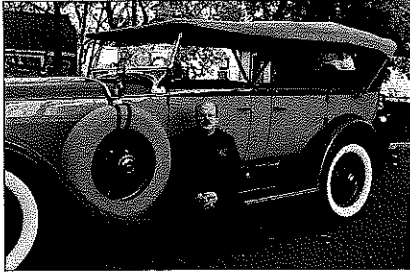
On the last Saturday of September in 2008 the Ironstone Concours, now in its 12th year, honored long-time CCCA member and all-around certified car nut Jack Passey. How exactly does one attain the coveted status of being certifiably car crazy? Just follow Jack's recipe and you'll be well on your way.

He's owned nearly 200 cars in his lifetime, most of them Classics. He's been a member of CCCA since 1958. He's judged at the Pebble Beach Concours d'Elegance for 35 years. He was Grand Marshal at the Classic Car Club of America® Museum's 2006 Grand Experience. He currently serves as Club technician for Lincoln K, KA and KB models. A book has recently been published about Jack, appropriately titled *For the Love of Old Cars: The Jack Passey Story*.

Past CCCA President Chris Bock, who has been involved in the Ironstone Concours since its inception, thought it would be nice to bring some of Jack's friends together to honor Jack, who was selected as Grand Marshal for the Ironstone event this year. What Jack didn't know was *how* he was going to be honored.

Jack's wife Mona, along with family and friends, gathered in Murphys, California for the Friday-night dinner. That evening, to Jack's surprise, the original artwork for the Concours poster was unveiled. It was a painting of Jack driving his favorite Classic, a 1933 Lincoln KB dual-cowl phaeton. Artist Roy E. Dryer III vividly captured the joy an enthusiast experiences when driving a favorite Classic. Mona reports that, days later, Jack would walk past the painting and just stare at it. I guess he's still in a state of shock.

Thanks to all who participated, including the poster partners Mosier Restorations, Steve Morton, Bill Burchett, Stephen Finn, John Mozart, Don Williams and the Blackhawk Collection. And thanks to Jack, too. Your enthusiasm for the hobby is clearly contagious.



ORGANIZATION TIPS DURING RESTORATION

Documenting your project as you go.

By Chris Wantuck

Few of us take on the seemingly immense task of performing a full ground up restoration of a collector car. Even if it's not a complete restoration that you're contemplating, there are some steps you can take that will aid you in documenting your project that will be invaluable when you go through the process of reassembly. This article suggests some obvious and some not well known tips that should help you and perhaps others documenting a certain model collectible.

During disassembly, take the time to capture the details of how parts are mounted, their appearance and orientation, and even the recognition of missing or broken pieces. This is not to say that over the past several decades some changes were made that altered the original version, but at least it is important to document these details as they're currently presented and have them to compare at a later time. This process starts with a good notebook providing a near diary narrative coupled with images and diagrams. Legible handwriting (preferably in print) and capturing images has never been easier.

Digital Camera – A convenient way to document details is with a camera. Digital cameras offer the ability to take as many pictures as you like and delete the ones that don't quite look right. You can take several pictures of a particular area, one at a distance, another at moderate zoom to crop out surrounding areas and full zoom for close up

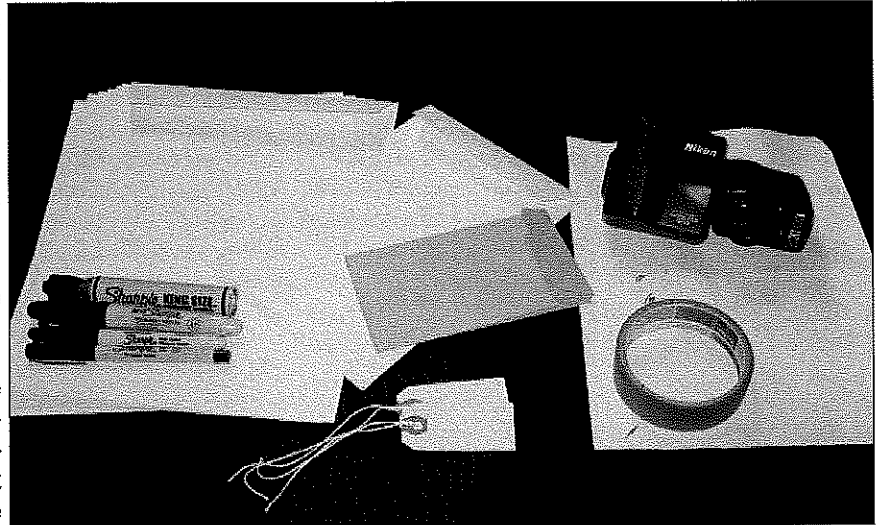


Photo 1—Clockwise: Sharpie Brand markers. Large self adhesive envelopes, medium size 6x9 envelopes, smaller 2x4 envelopes, older Nikon Coolpix digital camera, painters masking tape and reinforced I.D.tags.

shots. Some shots may get washed out from the flash, so taking pictures with the flash disabled and using just the ambient lighting should be considered. Most car collectors now have a home computer and many of those also have digital cameras. Even if a digital camera is used without the aid of a home computer, unwanted pictures can be deleted before sending them off to be developed. The prices of digital cameras has fallen enough where dedicating one for shop use is permissible. If you already have a digital camera, perhaps you'll considering upgrading to a newer more capable model for family use and using the older model as the shop camera. You should expect to get some grease and other dirt on it, so making one dedicated for the shop avoids messing up the family camera.

Bound Notebook Diary – Purchase a bound book either with or without lines for use as your diary. Art or craft supply stores are great sources for these types of books. Avoid loose leaf or spiral books as the paper is thin and pages can be torn out too easily. Don't forget to date each entry.

Home Computer – The advantage of including a home computer is the ability to view digital pictures at any time which includes zooming in on a particular area of interest

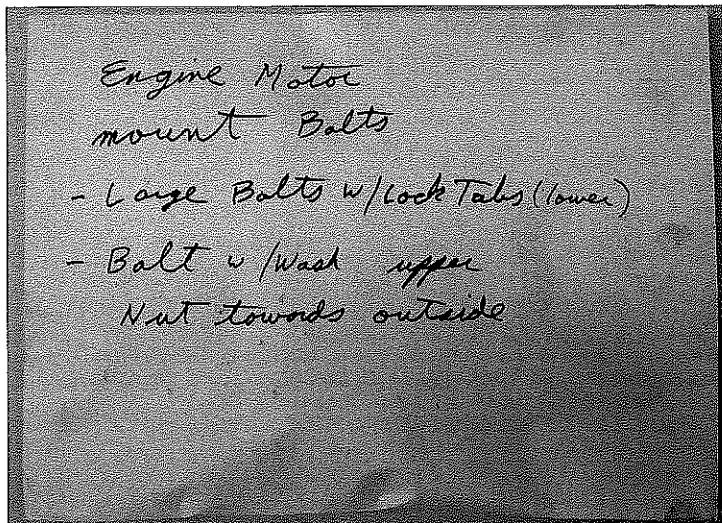
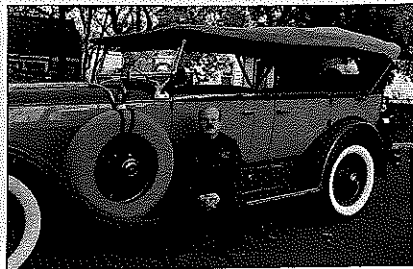


Photo 2—Large envelope marked with contents. Note that the date should have been included in the upper right hand corner.



ORGANIZATION TIPS DURING RESTORATION

Documenting your project as you go.

By Chris Wantuck

Few of us take on the seemingly immense task of performing a full ground up restoration of a collector car. Even if it's not a complete restoration that you're contemplating, there are some steps you can take that will aid you in documenting your project that will be invaluable when you go through the process of reassembly. This article suggests some obvious and some not well known tips that should help you and perhaps others documenting a certain model collectible.

During disassembly, take the time to capture the details of how parts are mounted, their appearance and orientation, and even the recognition of missing or broken pieces. This is not to say that over the past several decades some changes were made that altered the original version, but at least it is important to document these details as they're currently presented and have them to compare at a later time. This process starts with a good notebook providing a near diary narrative coupled with images and diagrams. Legible handwriting (preferably in print) and capturing images has never been easier.

Digital Camera – A convenient way to document details is with a camera. Digital cameras offer the ability to take as many pictures as you like and delete the ones that don't quite look right. You can take several pictures of a particular area, one at a distance, another at moderate zoom to crop out surrounding areas and full zoom for close up

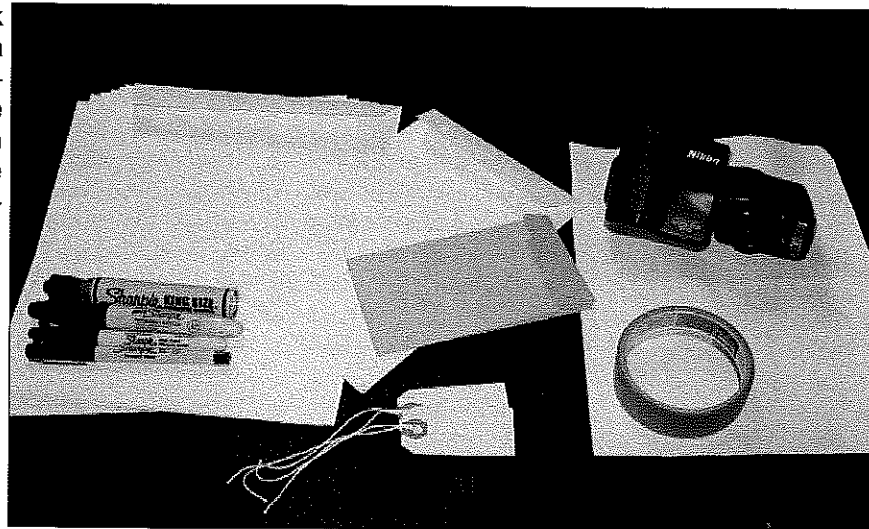


Photo 1—Clockwise: Sharpie Brand markers. Large self adhesive envelopes, medium size 6x9 envelopes, smaller 2x4 envelopes, older Nikon Coolpix digital camera, painters masking tape and reinforced I.D. tags.

shots. Some shots may get washed out from the flash, so taking pictures with the flash disabled and using just the ambient lighting should be considered. Most car collectors now have a home computer and many of those also have digital cameras. Even if a digital camera is used without the aid of a home computer, unwanted pictures can be deleted before sending them off to be developed. The prices of digital cameras has fallen enough where dedicating one for shop use is permissible. If you already have a digital camera, perhaps you'll be considering upgrading to a newer more capable model for family use and using the older model as the shop camera. You should expect to get some grease and other dirt on it, so making one dedicated for the shop avoids messing up the family camera.

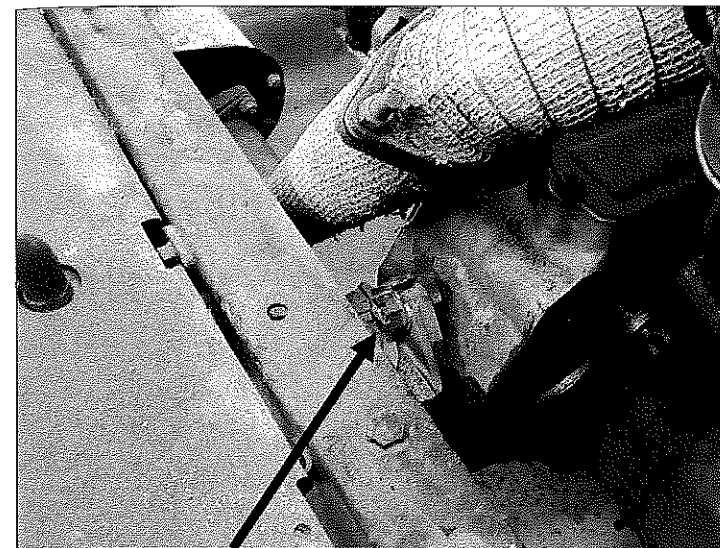
Bound Notebook Diary – Purchase a bound book either with or without lines for use as your diary. Art or craft supply stores are great sources for these types of books. Avoid loose leaf or spiral books as the paper is thin and pages can be torn out too easily. Don't forget to date each entry.

Home Computer – The advantage of including a home computer is the ability to view digital pictures at any time which includes zooming in on a particular area of interest

Photo 2—Large envelope marked with contents. Note that the date should have been included in the upper right hand corner.

Engine Motor
mount Bolts

- Large Bolts w/lock Tabs (lower)
- Bolt w/Wash upper
Nut towards outside



ENGINE MOUNTING BOLTS, NUT TO OUTSIDE, COTTER PIN HORIZONTAL

Photo 3—Example of a standard JPEG digital camera image that has had notes added to it and resaved as a .jpg image using PowerPoint.

without the time or expense of an enlargement. If necessary, an image can be printed using either the less expensive paper or high quality photographic paper, depending on the task at hand. Also, using common Microsoft tools like PowerPoint help with documenting along the way. Did you know that PowerPoint allows you to insert a picture into a slide, add comments or highlight areas with arrows and resave it as a .jpg picture? Be attentive when using the Save As function to save as a .jpg image.

Envelopes – The use of many different sized envelopes helps greatly when trying to keep your project organized. Large envelopes with self adhesive flaps make parts organization quite easy. Before depositing the parts and sealing it, write on the envelope the contents and any notes such as part orientation or inventory. Plan ahead when organizing parts into envelopes. Parts that will require chrome plating should be stored separate from others for easy retrieval when it comes to time for plating



Left: Photo 4—This discarded aluminum baker's rack works well as a multi drawer storage unit. Thin 1/4 inch plywood was used to make the thirty drawers. Not shown are the large bins on top.

Right: Photo 5—Adding these clear label holders to fronts helps mark drawer contents. The label cards can easily be changed.

them. You can close envelopes using painters low adhesive masking tape if you think you may have to retrieve a part for fitting or inspection rather than tearing the envelope open and resealing it.

Marking Pens – Marking pens from Sharpie come in different sizes ranging from thin tip pens to chisel tip markers. Sharpie permanent markers are worth the extra cost over other markers as their inks don't smear and mark almost any surface.

Tags – Reinforced tags with string or wire can be used for those parts too large to fit into an envelope. Avoid the little cheap "price" tags with light thread. A tag that gets ripped off its part is of no value. You can add as many tags as needed and suggest writing on both sides of the tag in case dirt or oil makes one side unreadable.

Shelving and other storage – Heavy duty shelves provide a great place to store parts while the restoration continues until you need them. Avoid comingling your parts with any non-automotive supplies. Lawn fertilizer or paint stripper leaking onto your headlights or other parts and causing them to corrode will only add unnecessary expense or worse, permanently damage them. Some heavy duty "wire" type shelving units come with adjustable shelves and roller casters which makes their movement around the shop even easier. A discarded aluminum baker's cooling rack was just the ticket for making a storage rack for small parts. A weekend project made the 30 individual drawers using 1/4 inch Luan plywood.

Summary:

Relying on your memory on how your collectible was assembled is a recipe for disaster. Take many pictures of specific areas from different angles. You can always refer back to them later.

Record a chronological diary of your events. Include phrases that indicate how some parts are related to other areas. No one is grading you on your narrative so use vivid descriptions when appropriate.

Use a separate book or section of the diary to record a "parts or materials needed" list.

